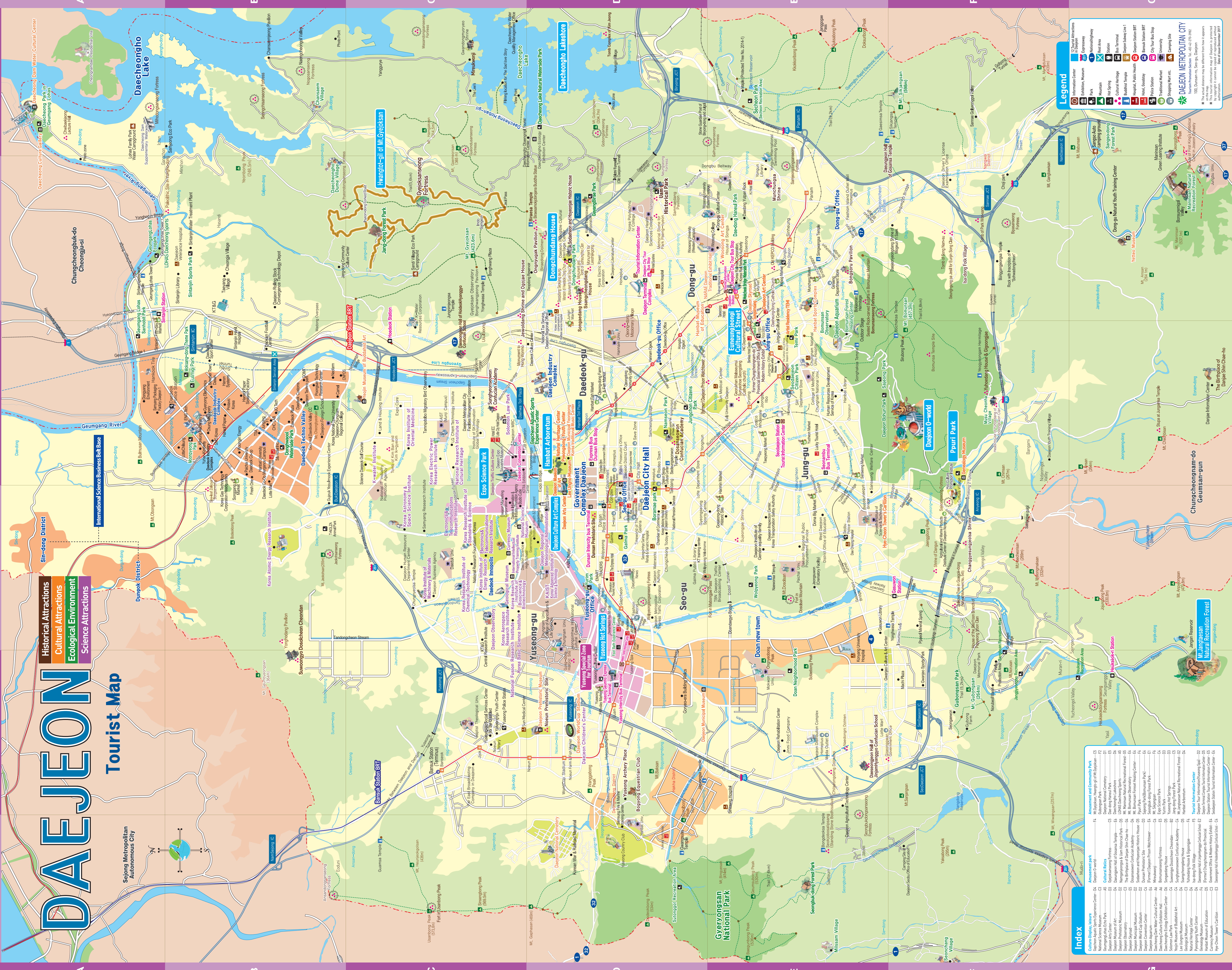


Tourist Map

[illegible]

30 Years History and 3 Eras Traditional Restaurants				
Name	Location	Type of Food	Telephone	
Baekhoeng	48-1, Dayeon-ro, 71Beongni, Dong-gu	Sundangaebagi	+82-42-526-0140	
Saen Gulgulgi	11 Dayeon-ro, 82Beongni, Dong-gu	Kalgulgi	+82-42-526-2799	
Wanggan Siding	226, Nam-ro, 19Beongni, Dong-gu	Roast Chicken with Bulgugchi	+82-42-526-1463	
Jokkold Siding	208, Unsa-ro, Dong-gu	Horsemeat Pig's Feet	+82-42-523-4633	
Saemaeul Saemaeul Jangjuk	13, Dayeon-ro, 82Beongni, Dong-gu	Kalgulgi	+82-42-525-5422	
Taehwajung	28, Changun-ro, 20Beongni, Dong-gu	Jaungyeomung	+82-42-526-4407	
Pyeongnam Siding	381, Dayeon-ro, 82Beongni, Dong-gu	Soft Tofu	+82-42-526-4141	
Gyeongdong Dhyngso Bok	169, Oguk-ro, Dong-gu	Noodles with Spaid	+82-42-438-3077	
Junggwan Siding	64, Dayeon-ro, 81Beongni, Dong-gu	Jaungyeomung	+82-42-526-5583	
Byeolchiun	29, Saemae-ro, 165Beongni, Dong-gu	Topping Hanbap	+82-42-271-0207	
Dayeong Galbiip	48-1, Dayeongheon-ro, Jung-gu	Pork Ribs	+82-42-526-0758	
Dossoreon Siding	67, Daehung-ro, Jung-gu	Pollack Steak	+82-42-526-5444	
Sungnamding	15, Dayeong-ro, 42Beongni, Jung-gu	Bakery	+82-1558-8869	
Sonamaji	17, Dayeong-ro, 44Beongni, Jung-gu	Noodles with Spaid	+82-42-526-1164	
Hajung Siding	295-1, Borna-ro, Jung-gu	Kimchi Steak	+82-42-526-0587	
Hyukson Siding	6, Gyeongyeon-ro, 87Beongni, Jung-gu	Dakbokletungum	+82-42-523-2644	
Daedobul Hanmyeonggye	95, Gyeokae-ro, 158Beongni, Jung-gu	Cold Noodles	+82-42-525-9000	
Saerom Myeonggye	62, Jungyeon-ro, Jung-gu	Cold Noodles	+82-42-526-4556	
Deumgyung Hanmyeonggye	127, Choongyeon, Jung-gu	Korean Table d'hôte	+82-42-526-8866	
Daesong Siding	467-1, Bongsangmyeong-ro, Jung-gu	Korean Table d'hôte	+82-42-527-7203	
Deungjeon Siding	141, Deungjeon-ro, 158Beongni, Jung-gu	Jaungyeomung, Jambong	+82-42-526-1280	
Jinrilli	65, Jeokjeong-ro, Jung-gu	Stir-fried Tofu	+82-42-526-9144	
Hanbok Kaljipak	6, Maekyungjae-ro, Jung-gu	Soup, Tofu, Kalgulgi	+82-42-526-8590	
Jung Siding	37-13, Joongsong-ro, 118Beongni, Jung-gu	Dakbokletungum, Bindaetuk	+82-42-257-0505	
Gyeonghwa Siding	29, Bise-beongni, Dayeong-ro, Jung-gu	Stir-fried Tofu, Cucumber Noodles	+82-42-526-4571	
Wongyeong Siding	27-9, Paratse-ro, 84, Gyeongyeon-ro, Jung-gu	Grated Seoy Chicken, Goat Steak	+82-42-531-6016	
Gwangcheun Siding	21-9, Paratse-ro, 84, Gyeongyeon-ro, Seog-gu	Goat Steak	+82-42-533-4415	
Saerim Myeonggye	107, Dusan-ro, 21Beongni, Seog-gu	Cold Noodles	+82-42-428-4029	
Minisul Pajipak	38, Jangyeon-ro, Hwaseong-gu	Mixed Fried Cold Food	+82-42-527-2257	
Hongcheon Siding	8, Tu-Kyeong, Gyeongyeon-ro, Hwaseong-gu	Ban Sprouts Bimbabagi	+82-42-523-7175	
Wongyeon Baeyong	64, Sinyangjeon-ro, 12Beongni, Daedeok-gu	Jaungyeomung, Jambong	+82-42-526-4176	

Food of Daejeon **Six Delicacies of Daejeon**



Dolorimuk (Acorn Jelly)
This dish is made with sliced acorn jelly, kimchi, and dried seaweed served in a broth base made of radish, anchovies, and dried kelp.

- Halseonjeonmul ☎ 42-935-5842 •Sangul Muljuk ☎ 42-42-935-8900
- Jugui Muljuk ☎ 42-935-2616 •Solgat Muljuk ☎ 42-42-935-5688
- Chong Muljuk ☎ 42-42-934-5787
- Samrit Halseon Muljuk ☎ 42-935-2947



Sutgol Naengmyeon (Cold Noodle)
This dish serves cold noodle with an authentic flavor of the Pyeongtong region of North Korea. The recipe for these noodles has been passed down for 40 years over four generations.

- Sutgoljeon Naengmyeon ☎ 42-42-861-2287



Samgyetang (Ginseng Chicken Soup)
This soup is made of Gyeosung chicken and Korean chicken soup, so it is a very nourishing soup that is set apart from regular ginseng chicken soup.

- Maheonsang ☎ 42-42-624-5556
- Gyeosung Samgyetang ☎ 42-42-256-3422
- Gyeosung Samgyetang (Jungang-dong) ☎ 42-42-427-7778 (Jungang-dong) ☎ 42-42-477-9999
- Jolsobang ☎ 42-42-323-9252



Doosotbat (Hot Pot Rice)
This unique, sizzling hot stone pot rice dish is made with fresh vegetables that have been locally grown. It is served with 20 different types of vegetable side dishes.

- Gwini Doosotbat ☎ 42-42-488-3340
- Jangsin Doosotbat ☎ 42-42-223-7877
- Jigyeon ☎ 42-42-714-5046



Seoltjeong (Ox Bone Soup)
This soup is served with a radish Kimchi and cabbage Kimchi as side dishes.

- Sinchon Seoltjeongang ☎ (Munhwa-dong) ☎ 42-254-6343
- Mameyong-dong ☎ 42-42-489-2322
- Hyeseong ☎ 42-42-473-4985
- Bojilgontang ☎ 42-42-556-7746



Daecheonggong Spicy Freshwater Fish Stew
This dish is Daegwon's specialty, which used to be served to the kings of the Joseon Dynasty. The flavor of this dish, which is made with freshwater fish that are caught from the unpolluted, pristine waters of Geumgung River, has an excellent taste with a refreshing flavor.

- Solgat Sikdang ☎ 42-42-932-3872 •Jahyeong ☎ 42-42-932-0661

Leisure, enjoyment, and happy Accommodation & Shopping					
Category	Name	Location	Level	Number of rooms	Telephone
Tourist Hotel	Hotel Sunshine	1700 Donggong-dong, Dong-gu	2	55	+82-42-420-4500
	Benikea Hotel Daejeon	50 Daegong-ro, 59Seobul-gu, Dong-gu	4	44	+82-42-251-5900
	Shangri-La Tourist Hotel	27-27 Inhaban-ro, 37Jongno, Seo-gu	3	54	+82-42-471-8002
	The Empress Hotel	29-29 Inhaban-ro, 37Jongno, Seo-gu	3	40	+82-42-485-8000
	Yoseon Hotel	9 Oncheon-ro, 15Yuseong-gu, Seo-gu	3	50	+82-42-420-8200
	Hotel InterConti	92 Oncheon-ro, Yuseong-gu, Seo-gu	21	217	+82-42-400-6000
	Hotel ICC	15 Eup-ro 128ong, Seong-gu, Daejeon	1	89	+82-42-866-4000
	JH Legend Hotel	21 Gyeong-ro, 14Jongno, Yuseong-gu	2	74	+82-42-228-8000
	Benikea TechnoHotel Daejeon	75 Techno Jangjeon-ro, Yuseong-gu	2	74	+82-42-871-8000
	Lotus City Hotel Daejeon	100 Eup-ro, 12Jongno, Yuseong-gu	3	31	+82-42-130-1000
Golf Course	S&H Hotel	49 Techno Jangjeon-ro, Yuseong-gu	3	75	+82-42-558-1500
	Lunar Convention	88 Oncheon-ro, Yuseong-gu	3	53	+82-42-822-0211
	Myungsha Spa Hotel	30 Oncheon-ro, 10Jongno, Yuseong-gu	1	40	+82-42-822-5656
Category	Name	Location	Number of floors	Telephone	
Golf Course	Sangho Golf Club	75, Dunsan-ro, 3Seobul-gu, Seo-gu	12	+82-42-495-0000	
	Good Morning Residence Hotel Hae	120, Dunsan-ro, 3Seobul-gu, Seo-gu	13	+82-42-495-0000	
	La Mia Residence Hotel	42, Dunsan-ro, 3Seobul-gu, Seo-gu	108	+82-42-434-4000	
	Goodview Sun Residence Hotel	29, Dunsan-ro, 3Seobul-gu, Seo-gu	109	+82-42-337-3919	
City	Toyoko Inn	13, Onsan-gongno, 13Jongno, Seo-gu	367	+82-42-541-1005	
	Central Residence Hotel	38 Daegong-ro, 45Jongno, Seo-gu	542	+82-42-255-3933	
	Dunsan Greytone Hotel	70, Dunsan-gongno, Seo-gu	211	+82-42-482-1000	
Category	Name	Location	Telephone		
Department Store	Galleria Time World	211, Donggong-ro, Seo-gu	+82-42-400-5000		
	Sung Department Store	100, Gyeokseuk-ro, Jung-gu	+82-42-226-1234		
Store	Little Department Store Daejeon	598, Gyeong-ro, Seo-gu	+82-42-401-2500		
	NI Department Store Daejeon Daegu Branch	141, Jangjeon-ro, Seo-gu	+82-42-718-2400		
Fashion Zone	Seo Zone	200, Dunsan-ro, Seo-gu	+82-42-479-9000		
	Fashion Zone 2	7, Wajonggyeom-dong, Seo-gu	+82-42-485-8100		
	Excelsior Hotel Daejeon	7, Gyeong-ro, Yuseong-gu	+82-42-485-8100		
Savoyres	Media City Hotel Daejeon	5, Gyeong-ro, Yuseong-gu	+82-42-556-6353		
	Savoyres Palace/Hotel of Nationality Corporation	200, Jangjeon-ro, 1Jongno, Dong-gu	+82-42-256-7656		
Traditional Market	Jungnang	783, Daegong-ro, Dong-gu	+82-42-226-6191		
	Hannam	94, Gyeong-ro, Seo-gu	+82-42-522-9004		
	Dongmaknang	20, Dongsil-gu, Seo-gu	+82-42-531-8889		
	Jungnang	20, Jungnang-ro, 3Seobul-gu, Daejeon-gu	+82-42-423-1600		
	Seonjari	74,7, Gyeong-ro, Yuseong-gu	+82-42-556-4889		
5-day Traditional Market	Seonjari (3rd, 5th, 7th)	5, Gyeong-ro, 1Jongno, Yuseong-gu	+82-42-932-8312		
	Seonjari	47, Seokjeong-ro, 2Jongno, Daejeon-gu	+82-42-932-8312		

Where families can make unforgettable memories **Village of Farm Experience**

- 39 Chansaeam Village**
Farm experience to education, a village full of stories
A typical farming village where the beauty of Daechungho Lake and the natural environment are in perfect harmony. It is the 'first farm experience vacation village in Korea.'
☎ Bus 62-71-2399 ☎ 703, Naengcheon-ro, Dong-gu
☎ Bus 62-71-171-2 ☎ Get off at Jangdeung Terminal station
☎ 2 minute walking distance
- 64 Musu cheonha Village** (http://musu.go2url.org)
A Trouble Free Village
Unlike other villages in the metropolitan area, this village has preserved its history, tradition, and farming culture.
☎ 482-42-2855 ☎ 5, Uman-ro, BSeon-gil, Jung-gu
☎ Bus 31 ☎ Get off at Musong Entrance ☎ 2 minute walking distance
- 61 Seonchang Village** (http://seonchang.com)
Village Located 12 Prohibition Sites
This village offers organic agricultural products such as rice, grapes, and chili peppers, as well as dynamic and amusing experiences for visitors.
☎ 482-42-8255 ☎ 11, Gyeongsang-ro, BSeon-gil, Yuseong-gu
☎ Songyeong-dong 111 ☎ 1 Gyeongsang-ro, BSeon-gil, Yuseong-gu
☎ Bus 102 ☎ Get off at Songyeong Station 111 ☎ 5 minute walking distance
☎ Bus 44 ☎ Get off at Songyeong 2-stop ☎ 10 minute walking distance
☎ Get off at Songyeong Train Station ☎ 25 minute walking distance
- 39 Daechungho Dume Village** www.39d.com
A Beautiful Village Reminiscent of a Piece of Art
Warm hearted, generous villagers offer various memorable experience programs that will soothe the mind and body of visitors.
☎ 482-42-10-1116-2705
☎ 77, Daechungho-ro, 126beon-gil, Daedeok-gu
- 61 Seodang Wilssam Village** (www.seodang.or.kr)
Bright Agriculture, Lively Farm
This village grows Korean wheat, so they offer various experience programs under the theme of Korean wheat, such as making noodles.
☎ 482-42-825-7881 ☎ 489, Seodang-ro, Yuseong-gu
☎ 482-42-825-7881 ☎ 489, Seodang-ro, Yuseong-gu
☎ Bus 41 ☎ Get off at Seodang Community ☎ 2 minute walking distance



Transportation Information

Train	Service Section	Distance(km)	Time	Frequency	Remarks
Korea Train	Daejeon-Seoul	159.8	1:30	92-99 daily	
Train Express	Daejeon-Busan	248.7	1:50	65 daily	Information Center of Daejeon Station and Daejeon Station
MTX	Seodaeseon-Yongju	157.6	1:40	10-13 daily	Seodaeseon Station
SRK	Daejeon-Seoul	241.6	2:10	2 daily	Seodaeseon Station
SRK	Daejeon-Seoul	153.8	0:58	40 daily	482-1544-7788
MTX	Daejeon-Busan	159.8	1:40	40 daily	

Daejeon Subway Line No.1

Service Section	Distance(km)	Time	Frequency	Remarks
Daejeon - Seon	153.2	2:00	10-30 minutes	
Daejeon - Icheon	174	2:00	30 minutes	
Daejeon - Cheonan	72.9	1:00	30-40 minutes	
Daejeon - Busan	254.7	3:00	2-3 hours	
Daejeon - Gangneung	148.7	2:00	30 minutes-1 hour	
Daejeon - Jeonju	90.4	1:20	30 minutes	
Daejeon - Gwangju	178.4	2:20	30-40 minutes	
Daejeon - Gangwon	277.6	3:20	30-40 minutes	
Yuseong - Seoul	157.2	2:10	20-30 minutes	Dunaeon Express Bus stop
Yuseong - Gwangju	165.7	2:00	10-50 minutes	482-42-485-0181

Express Bus

Service Section	Distance(km)	Time	Frequency	Remarks
Daejeon - Seoul	153.2	2:00	10-30 minutes	
Daejeon - Icheon	174	2:00	30 minutes	
Daejeon - Cheonan	72.9	1:00	30-40 minutes	
Daejeon - Busan	254.7	3:00	2-3 hours	
Daejeon - Gangneung	148.7	2:00	30 minutes-1 hour	
Daejeon - Jeonju	90.4	1:20	30 minutes	
Daejeon - Gwangju	178.4	2:20	30-40 minutes	
Daejeon - Gangwon	277.6	3:20	30-40 minutes	
Yuseong - Seoul	157.2	2:10	20-30 minutes	Dunaeon Express Bus stop
Yuseong - Gwangju	165.7	2:00	10-50 minutes	482-42-485-0181

Airport Limousine

Service Section	Time	Frequency	Remarks
Daejeon - Incheon International Airport	08:20-19:10	63daily	Incheon International Airport 482-1577-2600
Incheon International Airport - Daejeon	Terminal 1 06:00 - 23:30 Terminal 2 06:00 - 23:30	63daily	Cheongju International Airport 482-1661-2826
Daejeon - Cheongju International Airport	06:25-16:30	5daily	
Cheongju International Airport - Daejeon	11:50-21:00	4daily	

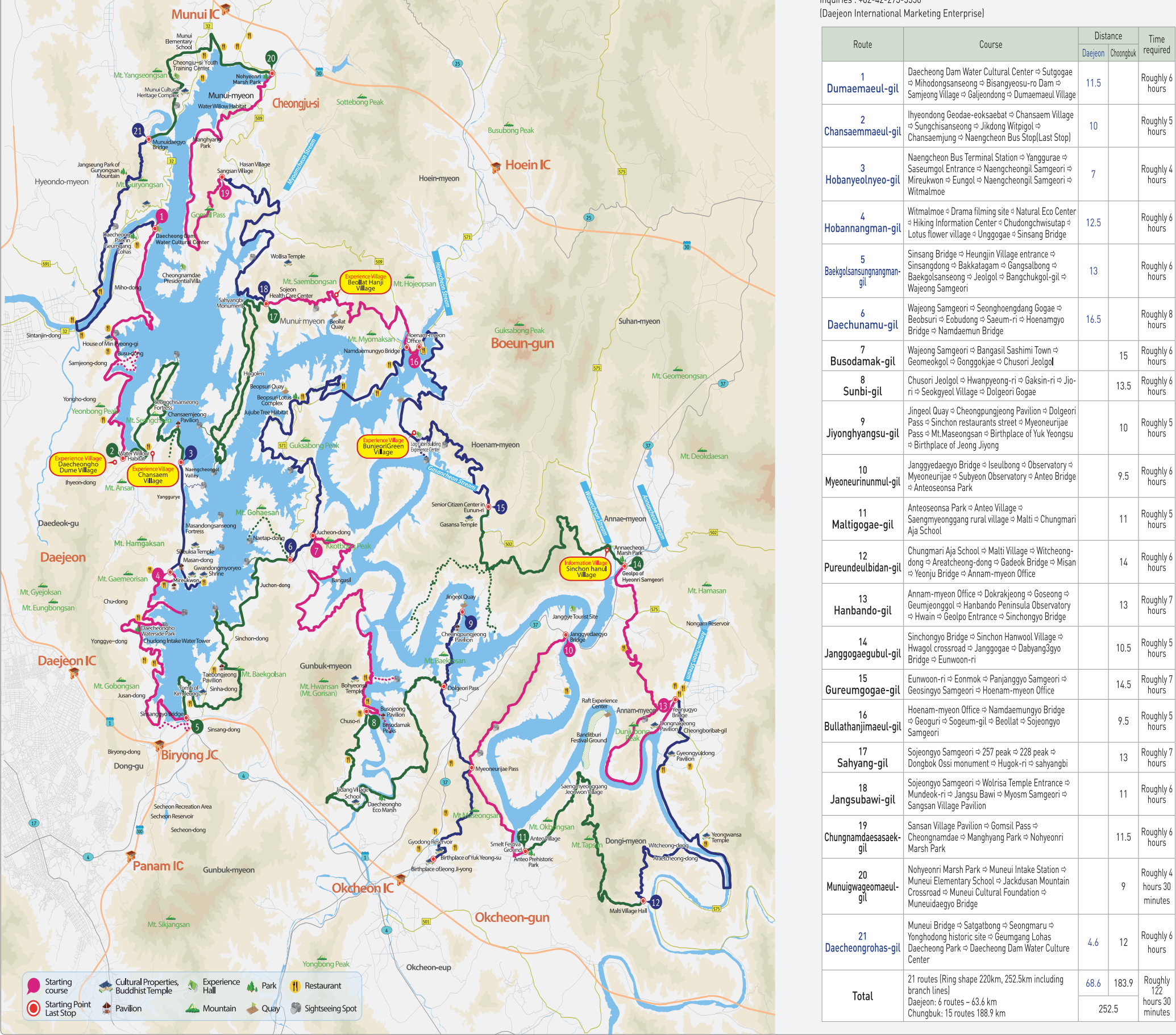
InterCity Bus

- Daejeon Terminal Complex** Seosan, Dangjin, Cheongju, Boryeong, Muan Direction **Tel. 482-1577-2299**
- Seonambu Bus Terminal** Gongju, Nonsan, Boryeong, Daejeon Direction **Tel. 482-1688-5016**
- Dunaeon InterCity Bus Terminal** Incheon International Airport, Gimpo International Airport, Dongseong, Seongnam, Seongnam Direction **Tel. 482-144-7638**
- Yuseong InterCity Bus Stop** Daejeon, Gangneung, Seonju, Wonju, Incheon, Seonju, Seongnam, Jeonju, Daejeon, Cheongju, Chungju, Taean, Boryeong, Cheongseong, Hongseong, Nonsan, Yeosu, Jeonju **Tel. 482-42-423-2100**

Call Taxi

Brand Name	Number of Taxi	Call Number
Yonghan Call	3,000	482-42-886-8000
Harbat Call	2,560	482-42-540-8000
Harbat S Call	1,145	482-42-242-8800

Courses of Daechungho Obaekri-gil



Sectional Course of Daechungho Obaekri-gil

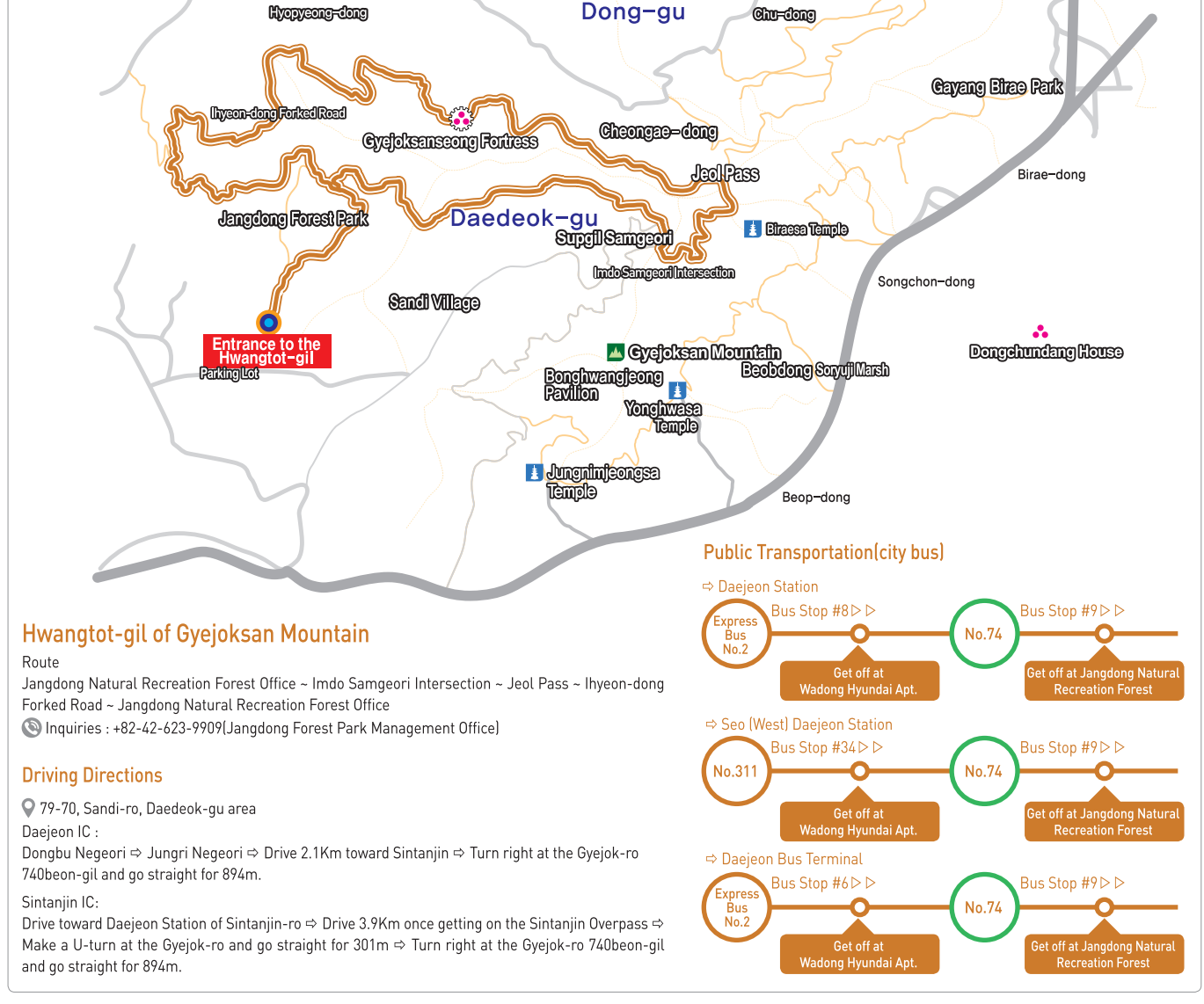
http://www.daejeon.go.kr
Inquiries : +82-42-273-5550
(Daejeon International Marketing Enterprise)

Route	Course	Distance	Time required
1 Dumaemaul-gil	Daechung Dam Water Cultural Center -> Seoncheon -> Mibongsaeng -> Bongsong -> Dam -> Seoncheon Village -> Gyeongju -> Dumaemaul Village	11.5	Roughly 6 hours
2 Chansaeam-gil	Hyungdong Geodeoksaebul -> Chansaeam Village -> Seoncheon -> Seoncheon -> Chansaeam Village -> Seoncheon -> Chansaeam Village	10	Roughly 5 hours
3 Hobanyedong-gil	Naengcheon Bus Terminal Station -> Yungu -> Saemung Entrance -> Naengcheon -> Seoncheon -> Seoncheon -> Seoncheon	7	Roughly 4 hours
4 Hobangnam-gil	Wimalmae -> Drama Film Site -> Natural Eco Center -> Hiking Information Center -> Chudongchilwad -> Lotus flower village -> Unggong -> Seoncheon	12.5	Roughly 6 hours
5 Baekjalsan-gil	Sinsang Bridge -> Hyeonjin Village entrance -> Sinsang Bridge -> Baekjalsan -> Baekjalsan -> Baekjalsan -> Baekjalsan	13	Roughly 4 hours
6 Daechungnam-gil	Wajong Samgong -> Seoncheon -> Seoncheon -> Seoncheon -> Seoncheon -> Seoncheon -> Seoncheon	16.5	Roughly 8 hours
7 Busodam-gil	Wajong Samgong -> Baekjalsan -> Seoncheon -> Seoncheon -> Seoncheon -> Seoncheon -> Seoncheon	15	Roughly 4 hours
8 Sunbi-gil	Chosun Jeilgi -> Hwangyeon-gil -> Gak-in -> Jo -> Seokjeong Village -> Daejeon	13.5	Roughly 6 hours
9 Jiyonghyang-gil	Jingde Quay -> Cheongju -> Seoncheon -> Seoncheon -> Seoncheon -> Seoncheon -> Seoncheon	10	Roughly 5 hours
10 Myeoneunum-gil	Seoncheon -> Seoncheon -> Seoncheon -> Seoncheon -> Seoncheon -> Seoncheon -> Seoncheon	9.5	Roughly 4 hours
11 Multigap-gil	Anteosaeng Park -> Anteosaeng Park -> Anteosaeng Park -> Anteosaeng Park -> Anteosaeng Park -> Anteosaeng Park	11	Roughly 5 hours
12 Pureundulbeon-gil	Chungnam Aja School -> Mali Village -> Witcheong -> Witcheong -> Witcheong -> Witcheong -> Witcheong	14	Roughly 4 hours
13 Hanbando-gil	Annam-myeon Office -> Daejeon -> Daejeon -> Daejeon -> Daejeon -> Daejeon -> Daejeon	13	Roughly 7 hours
14 Janggeogaebul-gil	Sinchong Bridge -> Sinchon Hanwul Village -> Sinchon Hanwul Village -> Sinchon Hanwul Village -> Sinchon Hanwul Village -> Sinchon Hanwul Village	10.5	Roughly 5 hours
15 Gureumgogae-gil	Eumwon -> Eumwon -> Eumwon -> Eumwon -> Eumwon -> Eumwon -> Eumwon	14.5	Roughly 7 hours
16 Bullahanjima-gil	Heonam-myeon Office -> Namsamgong Bridge -> Namsamgong Bridge -> Namsamgong Bridge -> Namsamgong Bridge -> Namsamgong Bridge	9.5	Roughly 5 hours
17 Sahyang-gil	Seoncheon -> Seoncheon -> Seoncheon -> Seoncheon -> Seoncheon -> Seoncheon -> Seoncheon	13	Roughly 7 hours
18 Jangsuabul-gil	Seoncheon -> Seoncheon -> Seoncheon -> Seoncheon -> Seoncheon -> Seoncheon -> Seoncheon	11	Roughly 4 hours
19 Chungnamdaesag-gil	Seoncheon -> Seoncheon -> Seoncheon -> Seoncheon -> Seoncheon -> Seoncheon -> Seoncheon	11.5	Roughly 4 hours
20 Munigongmae-gil	Seoncheon -> Seoncheon -> Seoncheon -> Seoncheon -> Seoncheon -> Seoncheon -> Seoncheon	9	Roughly 4 hours 30 minutes
21 Daechungrohae-gil	Munui Bridge -> Seoncheon -> Seoncheon -> Seoncheon -> Seoncheon -> Seoncheon -> Seoncheon	4.6	Roughly 8 hours
Total		48.6	183.9

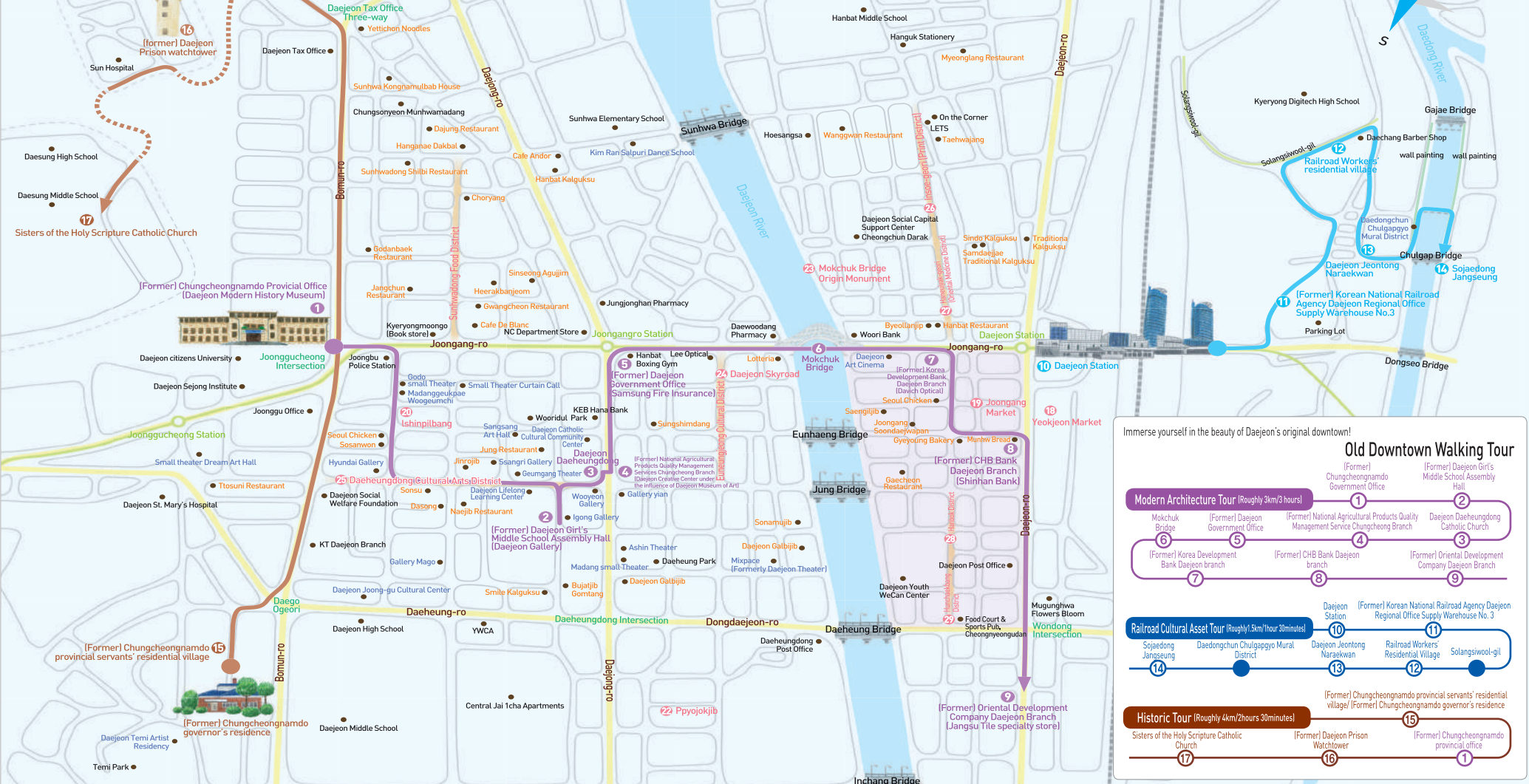
Courses of Daejeon Dullesan-gil



Hwangtot-gil of Gyeoksok Mountain



Old Downtown



- 1** Former Chungcheongnamdo Provincial Government Building (Daejeon Modern History Museum) Registered cultural property No. 18
☎ 482-42-709-4302 ☎ 101, Jung-ro, Jung-gu

2 Former Daejeon Girls' Middle School Assembly Hall (Daejeon Gallery) Municipal Cultural Asset No. 44
☎ 482-42-220-0510 ☎ 69, Boman-ro 233beon-gil, Jung-gu
☎ 482-42-252-9111 ☎ 471, Daesong-ro, Jung-gu

3 Daejeon Daehungdong Catholic Church Registered Cultural Asset No. 643
☎ 482-42-252-9111 ☎ 471, Daesong-ro, Jung-gu

4 Former National Agricultural Products Quality Management Service Chungcheong Branch (Daejeon Creative Center) Registered cultural asset No. 100
☎ 482-255-4700 ☎ 210, Daesong-ro, Jung-gu

5 Former Daejeon Government Office (Samsung Fire Insurance) ☎ 482-42-220-0573 ☎ 148, Jangang-ro, Jung-gu

6 Mokcheok Bridge (Daejeon River) ☎ 482-42-220-0573 ☎ 148, Jangang-ro, Jung-gu

7 Former Korea Development Bank Daejeon Branch (Davich Optical) Registered cultural asset No. 19
☎ 482-78-7428-4438 ☎ 118, Joongang-ro, Dong-gu

8 Former CHB Bank Daejeon Branch (Shinhan Bank) Registered cultural asset No. 20
☎ 482-42-253-0971 ☎ 783, Daesong-ro, Dong-gu

9 Former Daejeon Development Company Daejeon Branch (Jangsu Tile Specialists) Registered cultural asset No. 98
☎ 482-42-272-8003 ☎ 735, Daesong-ro, Dong-gu

10 Daejeon Station ☎ 482-1544-7888 (customer center) ☎ 715, Joongang-ro, Dong-gu (Joonggang) ☎ 482-42-221-1950 (Daejeon Station Tour Information Center)
- 11** Former Korean National Railroad Agency Daejeon Regional Office (Museum) Municipal Cultural Asset No. 30
☎ 482-42-709-4302 ☎ 143, Saek-gil, Dong-gu

12 Railroad Workers Residential Village (Chuldokwansachon) ☎ 482-42-709-4302 ☎ 1, Sweet Tigi, Dong-gu

13 Daejeon Jeontong Narekwan ☎ 482-42-436-8008 ☎ 2, Chulgyang-gil, Dong-gu

14 Sojaedong Jangseung (Jotem pole) ☎ 482-42-252-9111 ☎ 34, Daedongcheon-gil, Dong-gu

15 Former Chungcheongnamdo provincial servants residential village Registered cultural asset No. 101
☎ 482-42-220-0573 ☎ 148, Jangang-ro, Jung-gu

16 Former Chungcheongnamdo governor's residence Municipal cultural asset No. 49
☎ 482-42-220-0573 ☎ 13, Boman-ro 233beon-gil, Jung-gu

17 Former Daejeon Prison Watchtower Municipal cultural asset No. 47
☎ 482-42-242-7600 ☎ 34, Mokjeong-ro, Jung-gu

18 Sisters of the Holy Scripture Catholic Church Municipal Cultural Asset No. 45
☎ 482-42-255-5004 ☎ 13, Dongseong-ro 133beon-gil, Jung-gu

19 Yeokjeon Market ☎ 482-42-255-5004 ☎ 13, Dongseong-ro 133beon-gil, Jung-gu

20 Joongang Market ☎ 482-42-220-0573 ☎ 200beon-gil, Joongang-ro, Dong-gu

21 Ishinpilbang ☎ 482-42-257-7402 ☎ 23, Joongang-ro, 112beon-gil, Jung-gu
- 22** Former building of Samsung Elementary School (Hanbat Education Museum) Municipal Cultural Asset No. 30
☎ 482-42-709-4302 ☎ 143, Saek-gil, Dong-gu

23 Eclectic-style House in Daehung-dong, Daejeon (Pyryokjip) Registered cultural asset No. 377
☎ 119-15, Munchang-ro, Jung-gu

24 Mokcheok Bridge Origin monument ☎ 578, Daesongchundong-ro, Dong-gu

25 Daejeon Skyford ☎ 482-42-255-1410 ☎ Eunyeonjeong-gil, Jung-gu

26 Daehungdong Cultural Arts District ☎ 482-42-255-1410 ☎ Eunyeonjeong-gil, Jung-gu

27 Insoe-geori (Print district) ☎ 482-42-255-1410 ☎ Eunyeonjeong-gil, Jung-gu

28 Hanbyeok-geori (Oriental medicine district) ☎ 482-42-255-1410 ☎ Eunyeonjeong-gil, Jung-gu

29 Hanbok-geori (Hanbok District) ☎ 482-42-255-1410 ☎ Eunyeonjeong-gil, Jung-gu

30 Hunchaekbang Geori (Used book district) ☎ 482-42-255-1410 ☎ Eunyeonjeong-gil, Jung-gu

Where nature is at its finest Ecological Environment

- 31** GeumgangLohas Echo Park ☎ 167, Daechung-ro, Daedeok-gu
☎ 482-42-270-7878 ☎ 440, Bomunsangwon-ro, Jung-gu
☎ 482-42-270-7878 ☎ 440, Bomunsangwon-ro, Jung-gu

32 Daejeon Aquarium (www.daejeon.aquarium.com) ☎ 482-42-226-2100 ☎ 182, 110-beon-gil, Donggongju-ro, Dong-gu
☎ 482-42-270-7878 ☎ 440, Bomunsangwon-ro, Jung-gu

33 Gyeoksok Mountain Winding-gil (Earth Trail) ☎ 482-42-423-9909 ☎ 59, Jang-dong, Daedeok-gu
☎ 482-42-423-9909 ☎ 59, Jang-dong, Daedeok-gu

34 Jang-dong Forest Park ☎ 482-42-423-9909 ☎ 59, Jang-dong, Daedeok-gu
☎ 482-42-423-9909 ☎ 59, Jang-dong, Daedeok-gu

35 Experience Center of Foot Bath at Yuseong Hot Springs (yuseong.go.kr) ☎ 482-42-423-9909 ☎ 59, Jang-dong, Daedeok-gu

36 Yurim Park ☎ 482-42-423-9909 ☎ 59, Jang-dong, Daedeok-gu
☎ 482-42-423-9909 ☎ 59, Jang-dong, Daedeok-gu

37 Gaecheon Aquatic Sports Experience Center (www.watersports.or.kr) ☎ 482-42-423-9909 ☎ 59, Jang-dong, Daedeok-gu
☎ 482-42-423-9909 ☎ 59, Jang-dong, Daedeok-gu

38 Hanbat Arboretum ☎ 482-42-423-9909 ☎ 59, Jang-dong, Daedeok-gu
☎ 482-42-423-9909 ☎ 59, Jang-dong, Daedeok-gu

39 Daechung Lake & Daechungho Obaekri-gil ☎ 482-42-423-9909 ☎ 59, Jang-dong, Daedeok-gu
☎ 482-42-423-9909 ☎ 59, Jang-dong, Daedeok-gu

40 Seongbuk-dong Forest Park ☎ 482-42-423-9909 ☎ 59, Jang-dong, Daedeok-gu
☎ 482-42-423-9909 ☎ 59, Jang-dong, Daedeok-gu
- 41** Bomunsan Forest Healing Center ☎ 482-42-423-9909 ☎ 59, Jang-dong, Daedeok-gu
☎ 482-42-423-9909 ☎ 59, Jang-dong, Daedeok-gu

42 Boundae Observatory ☎ 482-42-423-9909 ☎ 59, Jang-dong, Daedeok-gu
☎ 482-42-423-9909 ☎ 59, Jang-dong, Daedeok-gu

43 Dae-dong Haneul Park ☎ 482-42-423-9909 ☎ 59, Jang-dong, Daedeok-gu
☎ 482-42-423-9909 ☎ 59, Jang-dong, Daedeok-gu

44 Gubongsan Mountain ☎ 482-42-423-9909 ☎ 59, Jang-dong, Daedeok-gu
☎ 482-42-423-9909 ☎ 59, Jang-dong, Daedeok-gu

45 Puri Park (http://www.puripark.or.kr) ☎ 482-42-423-9909 ☎ 59, Jang-dong, Daedeok-gu
☎ 482-42-423-9909 ☎ 59, Jang-dong, Daedeok-gu

46 O-world (www.o-world.kr) ☎ 482-42-423-9909 ☎ 59, Jang-dong, Daedeok-gu
☎ 482-42-423-9909 ☎ 59, Jang-dong, Daedeok-gu

47 Bomunsan Mountain (457.6m) ☎ 482-42-423-9909 ☎ 59, Jang-dong, Daedeok-gu
☎ 482-42-423-9909 ☎ 59, Jang-dong, Daedeok-gu

48 Sikjongsan Mountain (598m) ☎ 482-42-423-9909 ☎ 59, Jang-dong, Daedeok-gu
☎ 482-42-423-9909 ☎ 59, Jang-dong, Daedeok-gu

49 Jangseon-dong Mountain ☎ 482-42-423-9909 ☎ 59, Jang-dong, Daedeok-gu
☎ 482-42-423-9909 ☎ 59, Jang-dong, Daedeok-gu

50 Manisan Natural Recreational Forest (www.jangseon.or.kr) ☎ 482-42-423-9909 ☎ 59, Jang-dong, Daedeok-gu
☎ 482-42-423-9909 ☎ 59, Jang-dong, Daedeok-gu

51 Daejeon Dullesan-gil ☎ 482-42-423-9909 ☎ 59, Jang-dong, Daedeok-gu
☎ 482-42-423-9909 ☎ 59, Jang-dong, Daedeok-gu

52 Daejeon's three streams and its biking course ☎ 482-42-423-9909 ☎ 59, Jang-dong, Daedeok-gu
☎ 482-42-423-9909 ☎ 59, Jang-dong, Daedeok-gu

Where tradition and modernity meet Cultural Attractions

- 53** Daejeon National Cemetery (www.dnc.go.kr) ☎ 482-42-718-7114 ☎ 251, Hyeoncheon-gwon-ro, Yuseong-gu
☎ 482-42-718-7114 ☎ 251, Hyeoncheon-gwon-ro, Yuseong-gu

54 Daejeon Prehistoric Museum (www.daejeon.go.kr/pre/index.do) ☎ 482-42-270-8400 ☎ 126, Nonsong-dong, Yuseong-gu
☎ 482-42-270-8400 ☎ 126, Nonsong-dong, Yuseong-gu

55 Daejeon Municipal Museum (www.daejeon.go.kr/museum/index.do) ☎ 482-42-270-8400 ☎ 126, Nonsong-dong, Yuseong-gu
☎ 482-42-270-8400 ☎ 126, Nonsong-dong, Yuseong-gu

56 Daejeon Arts Center (www.daejeon.or.kr) ☎ 482-42-270-8400 ☎ 126, Nonsong-dong, Yuseong-gu
☎ 482-42-270-8400 ☎ 126, Nonsong-dong, Yuseong-gu

57 Lee Ungno Museum (www.leeungno.com) ☎ 482-42-411-9800 ☎ 131, Dunsanbeon-ro, Seo-gu
☎ 482-42-411-9800 ☎ 131, Dunsanbeon-ro, Seo-gu

58 Daejeon Museum of Art (http://dmm.daejeon.go.kr) ☎ 482-42-720-7370 ☎ 155, Dunsanbeon-ro, Seo-gu
☎ 482-42-720-7370 ☎ 155, Dunsanbeon-ro, Seo-gu

59 Natural Heritage Center (www.nhc.go.kr) ☎ 482-42-410-7410 ☎ 921, Yuseong-ro, Mangyong-dong, Seo-gu
☎ 482-42-410-7410 ☎ 921, Yuseong-ro, Mangyong-dong, Seo-gu

60 Hanbat Museum of Education (www.hme.or.kr) ☎ 482-42-420-2210 ☎ 94, Uam-ro, Dong-gu
☎ 482-42-420-2210 ☎ 94, Uam-ro, Dong-gu

61 Hye-Cheon Tower's Carillon (www.hcda.or.kr) ☎ 482-42-588-4114 ☎ 100, Hyecheon-ro, Seo-gu
☎ 482-42-588-4114 ☎ 100, Hyecheon-ro, Seo-gu

62 Skyroad (http://skyroad.net) ☎ 482-42-250-4142 ☎ 47, Pyeonggong-ro, Jung-gu (Pyongyang-dong)
☎ 482-42-250-4142 ☎ 47, Pyeonggong-ro, Jung-gu (Pyongyang-dong)
- 63** Daejeon Station & its memorable old fashioned noodles ☎ 482-42-250-4142 ☎ 47, Pyeonggong-ro, Jung-gu (Pyongyang-dong)
☎ 482-42-250-4142 ☎ 47, Pyeonggong-ro, Jung-gu (Pyongyang-dong)

64 Daejeon Jeontong Narekwan (http://naekwan.or.kr) ☎ 482-42-250-4142 ☎ 47, Pyeonggong-ro, Jung-gu (Pyongyang-dong)
☎ 482-42-250-4142 ☎ 47, Pyeonggong-ro, Jung-gu (Pyongyang-dong)

65 Sungsimdang (www.sungsimdang.or.kr) ☎ 482-42-250-4142 ☎ 47, Pyeonggong-ro, Jung-gu (Pyongyang-dong)
☎ 482-42-250-4142 ☎ 47, Pyeonggong-ro, Jung-gu (Pyongyang-dong)

66 Hyol World (www.daejeon.go.kr/hyol) ☎ 482-42-250-4142 ☎ 47, Pyeonggong-ro, Jung-gu (Pyongyang-dong)
☎ 482-42-250-4142 ☎ 47, Pyeonggong-ro, Jung-gu (Pyongyang-dong)

Where our history comes to life Historical Attractions

- 67** Suwonjo Doseolche